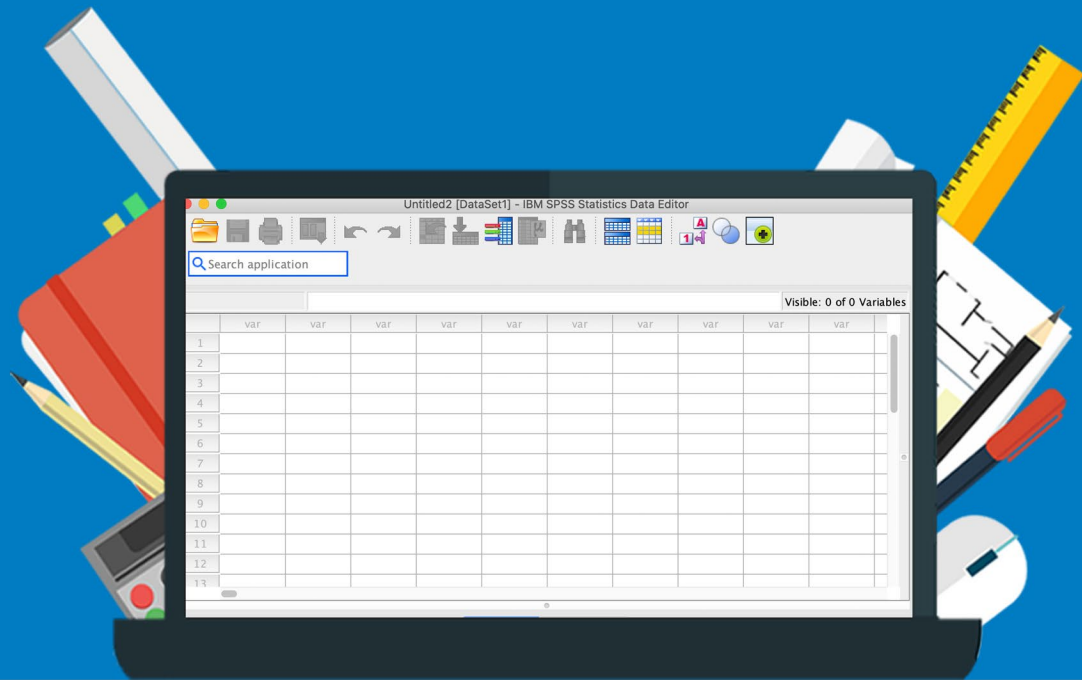


Installation Manual



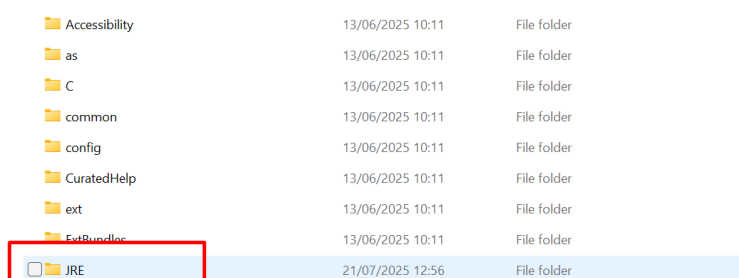
SPSS Statistics Interim Fix

For Windows

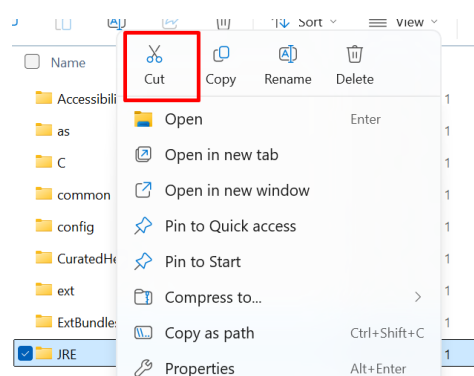
Attention: In order to apply the Interim Fix you must be logged in as Administrator.

Step 1: Go to the folder where you installed SPSS, this is usually C:\Program Files\IBM\SPSS Statistics\. Then, right mouse click on the JRE folder.

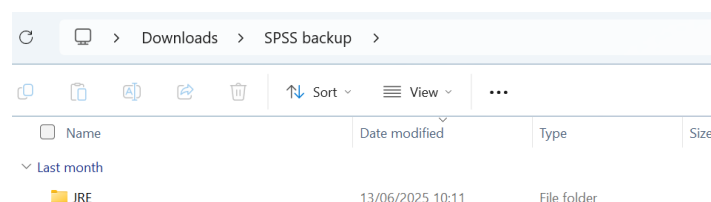
Attention: Are you using SPSS 27? In that case the installation folder is C:\Program Files\IBM\SPSS\Statistics\27.



Step 2: Click on “Cut”, or use the Ctrl + X shortcut.



Step 3: In order to work safely, we'll first make a back-up of the current Java-folder in SPSS. Move the “JRE” folder from the SPSS installation folder **to a safe place outside of the SPSS folder, for example a folder on your desktop**. In this case we created a new folder and called it “SPSS backup”. Right mouse click on “Paste” or use the Ctrl + V shortcut.



Step 4: Start the download for the Interim Fix for your version of SPSS. In this case the fix for SPSS 31 will be downloaded.



Download 31.0.0.0-IM-S31STAT-ALL-IF001.zip (247.2 MB)

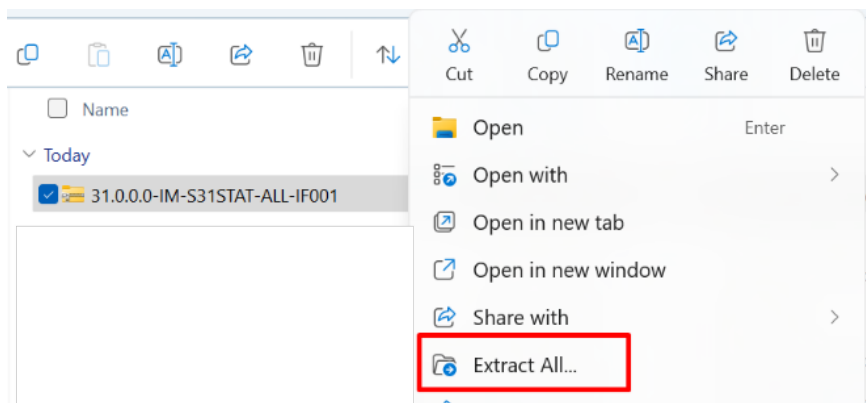
Directe link

You can find the link to the Interim Fix for the different versions here:

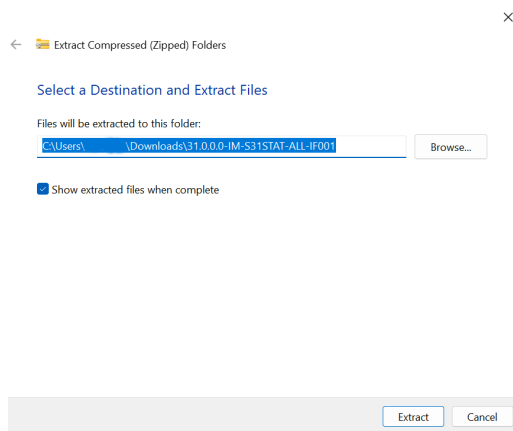
- SPSS 27: <https://surfdrive.surf.nl/files/index.php/s/X6qF5ZxYucBzWCb>
- SPSS 28: <https://surfdrive.surf.nl/files/index.php/s/z5gpC5ceXzCLQzg>
- SPSS 29: <https://surfdrive.surf.nl/files/index.php/s/ThhTPomfU3DgsAw>
- SPSS 30: <https://surfdrive.surf.nl/files/index.php/s/ayNVXAZQjglilge>
- SPSS 31: <https://surfdrive.surf.nl/files/index.php/s/GReJc5SFb3xino7>

Step 5: Click on the downloaded file. Right mouse click on the .zip file and choose “Extract All...”.

Attention: You might find the .zip file is already extracted. In that case, you can skip steps 5 and 6 and continue on to step 7.



Step 6: Choose where you'd like to extract the .zip file to and click on "Extract".



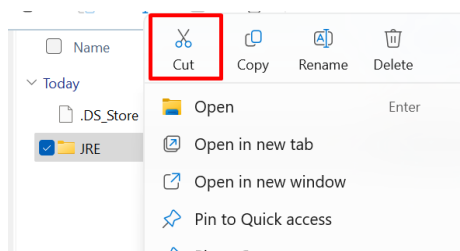
Step 7: You will now see two folders. Click on the bottom folder.

▼ Today			
📁 __MACOSX	21/07/2025 12:57	File folder	
📁 31.0.0.0-IM-S31STAT-ALL-IF001	21/07/2025 12:56	File folder	

Step 8: Open the "Win64" folder.

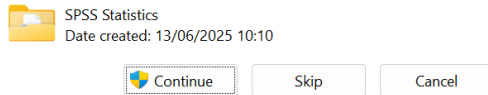
📁 .DS_Store	21/07/2025 12:56	DS_STORE File	11 KB
📄 Abstract	21/07/2025 12:56	Text Document	1 KB
📄 Readme_31.0.0.0-01	21/07/2025 12:56	Text Document	3 KB
📁 Linux64	21/07/2025 12:56	File folder	
📁 pLinux64	21/07/2025 12:56	File folder	
📁 zLinux64	21/07/2025 12:56	File folder	
📁 Win64	21/07/2025 12:56	File folder	
📁 MacOS	21/07/2025 12:56	File folder	

Step 9: With your right mouse button, click on the "JRE" folder and choose "Cut" as described in step 2.

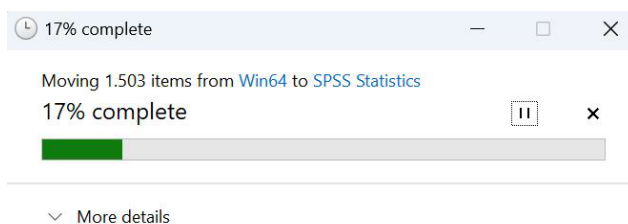


Step 10: Go back to the SPSS installation folder and paste the “JRE” folder as described in step 3. You will now be asked for permission to make changes to the installation folder. Click on “Continue”.

You'll need to provide administrator permission to move to this folder



Step 11: The files will now be transferred, this may take a while.



Step 12: The new “JRE” folder will now appear in the installation folder. The date behind the folder will show it was modified recently. You do not have to keep the old “JRE” folder you removed in step 3.

Accessibility	13/06/2025 10:11	File folder
as	13/06/2025 10:11	File folder
C	13/06/2025 10:11	File folder
common	13/06/2025 10:11	File folder
config	13/06/2025 10:11	File folder
CuratedHelp	13/06/2025 10:11	File folder
ext	13/06/2025 10:11	File folder
ExtBundles	13/06/2025 10:11	File folder
JRE	21/07/2025 14:22	File folder

Step 13: You can now get back to using SPSS!

