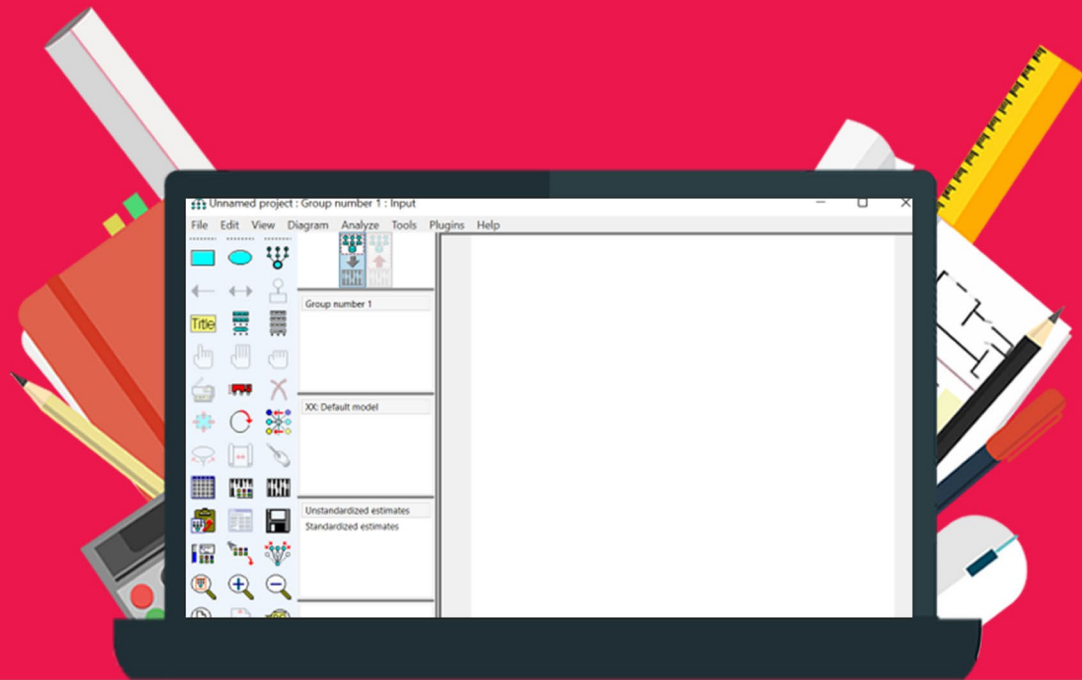


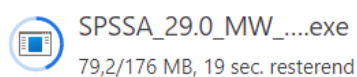
# Installation Manual



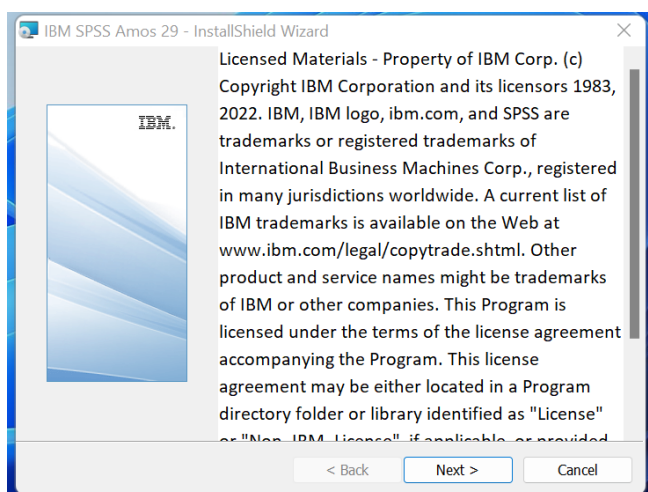
## SPSS Amos 29

For Windows

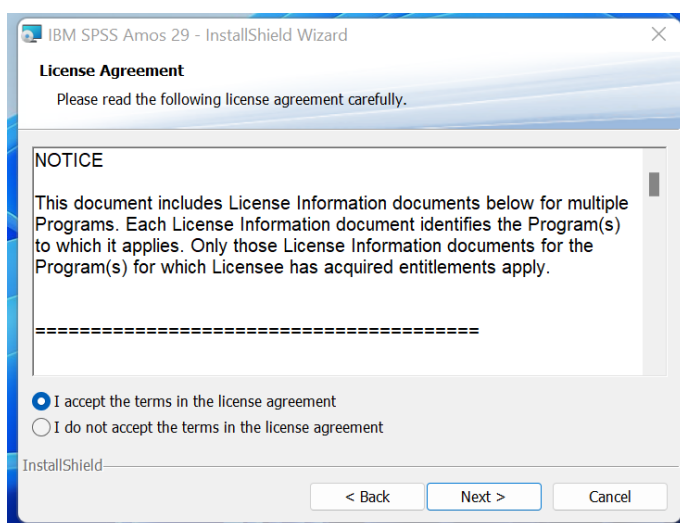
**Step 1:** Download your order. You can find your order under 'Orders' in your account. This is also where you can find your license code.



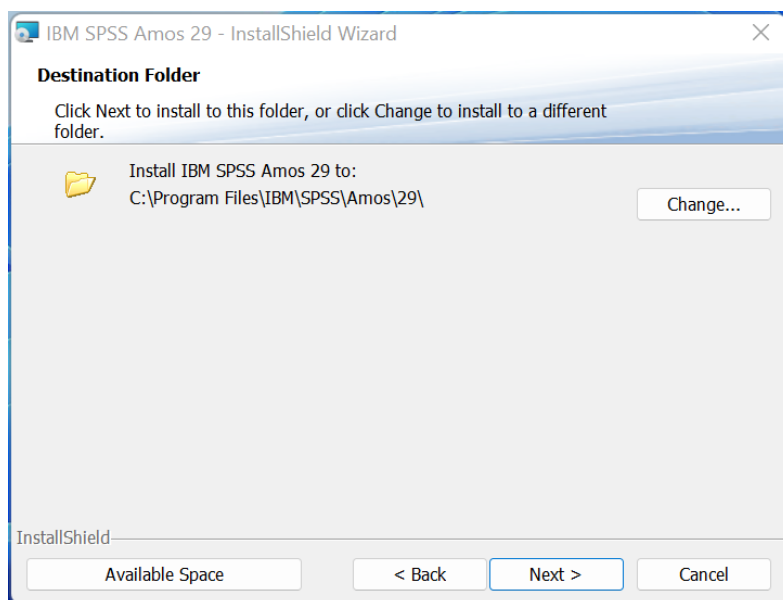
**Step 2:** Double click on the downloaded file. The installation will now open. Read through the license agreement and click 'Next'.



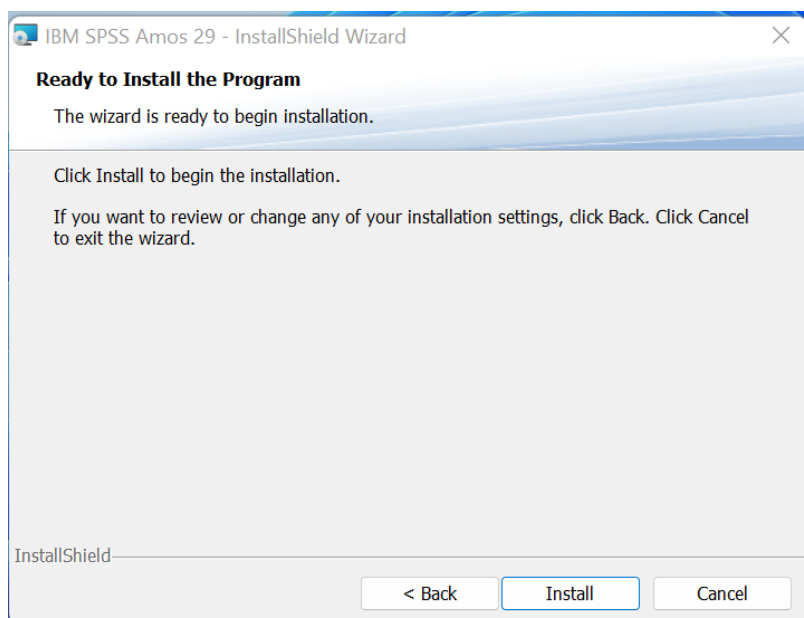
**Step 3:** Accept the terms in the license agreement and click 'Next'.



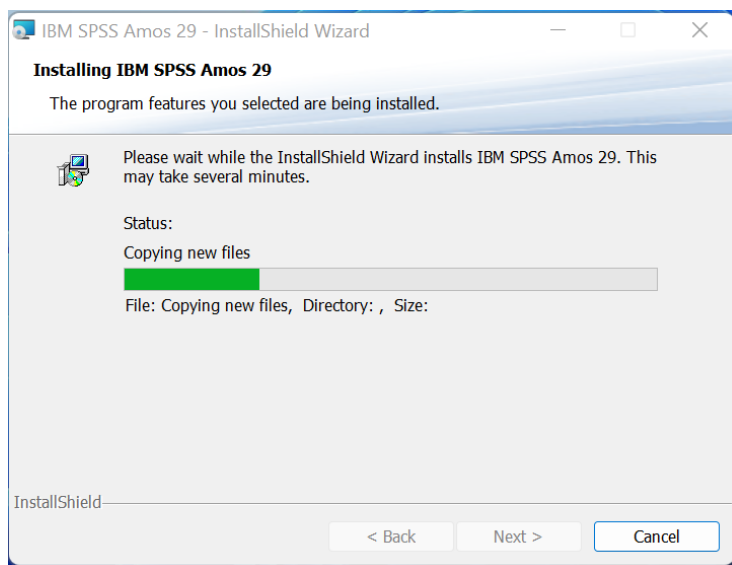
**Step 4:** In this screen you can choose the folder where you want to install Amos. Click 'Change' if you want to change the installation folder. Once the right folder is selected, click 'Next'.



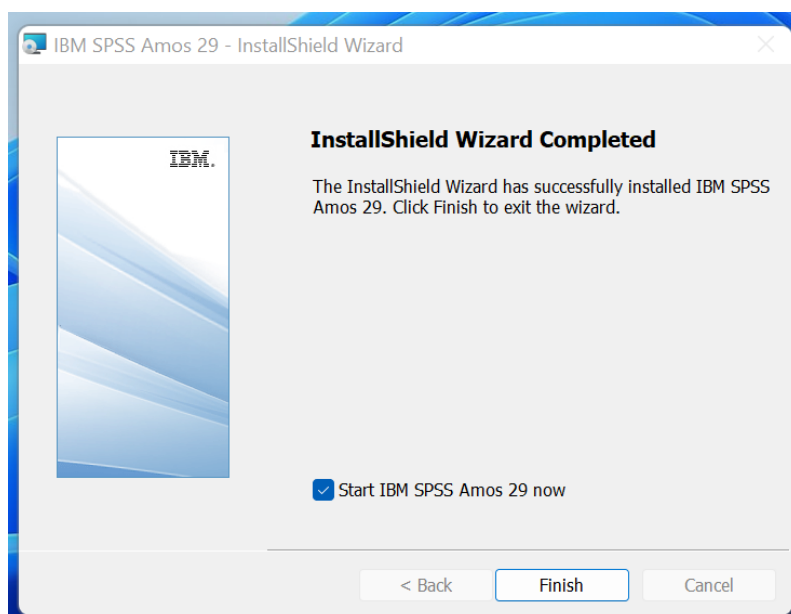
**Step 5:** Click 'Install'. The installation will now start.



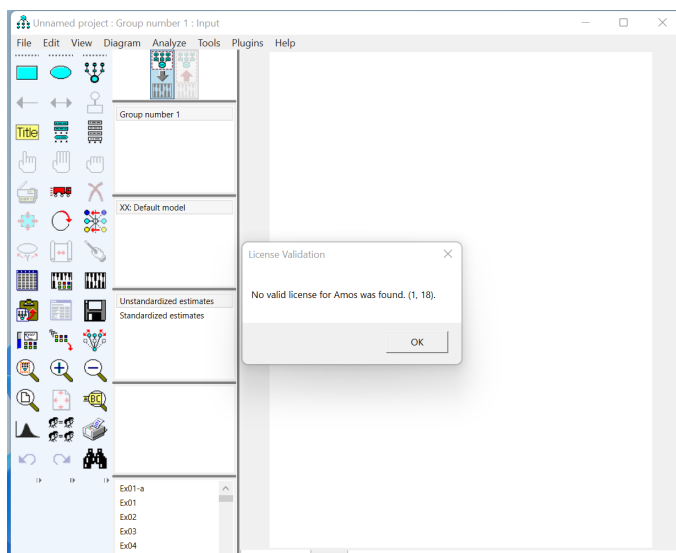
**Step 6:** SPSS Amos 29 will now install. This may take a while.



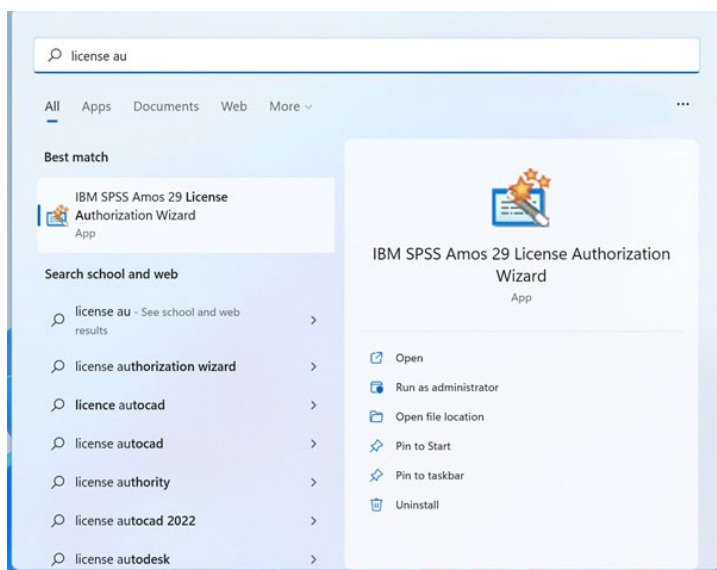
**Step 7:** The installation is now complete. Click 'Finish'.



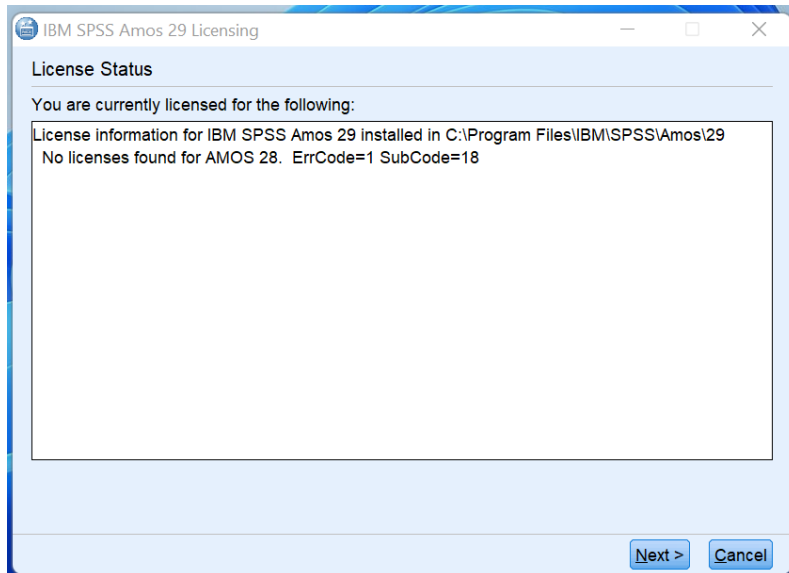
**Step 8:** If you open Amos, you will get the notification: 'No valid license for Amos was found (1, 18)'. This is because the license has not been activated yet. Click 'OK'.



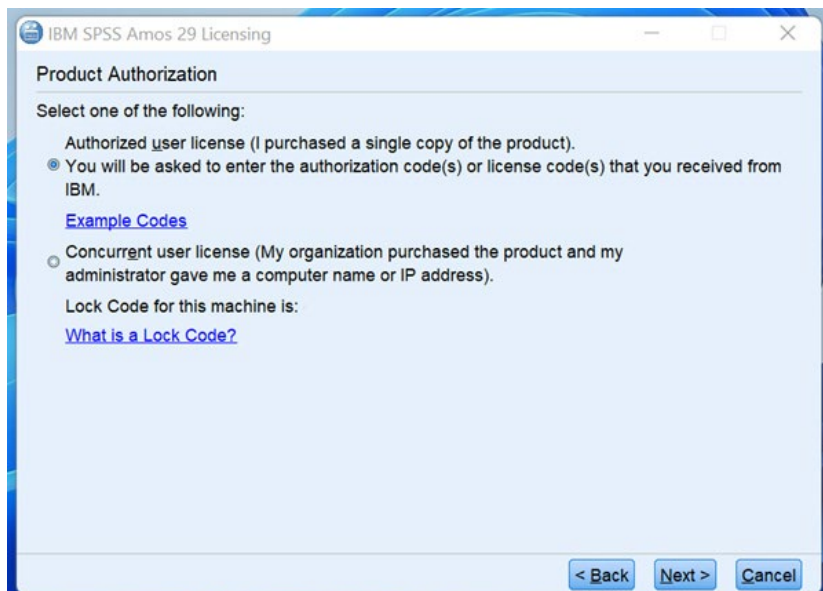
**Step 9:** You can activate your Amos license by opening the 'License Authorization Wizard'. You can find the License Authorization Wizard by clicking the 'Start' button (the Windows logo) or the looking glass button next to the Windows logo in your menu. Search for 'License Authorization Wizard', it will now open.



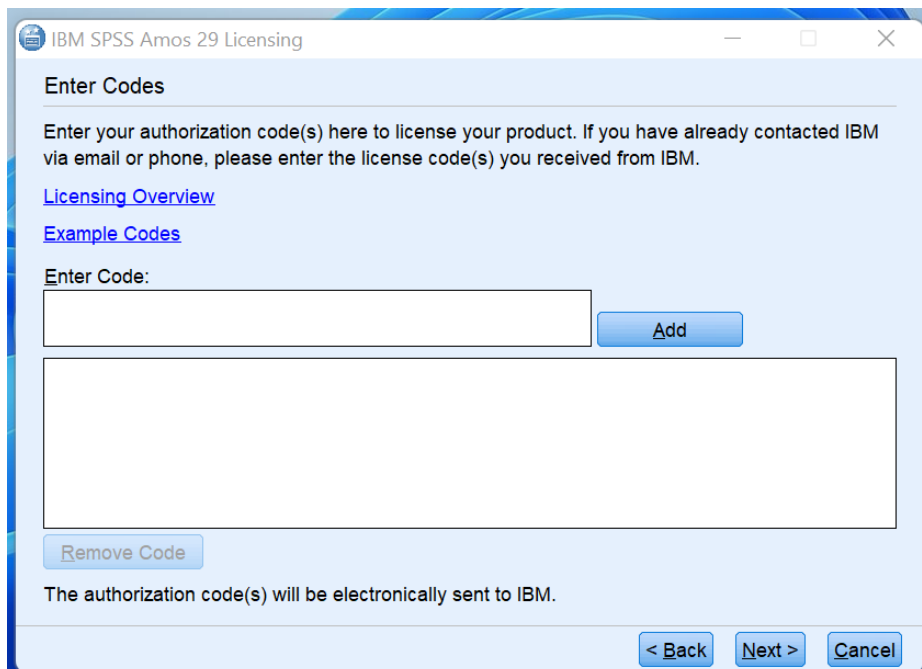
**Step 10:** You will get a notification saying no licenses have been found. Click 'Next'.



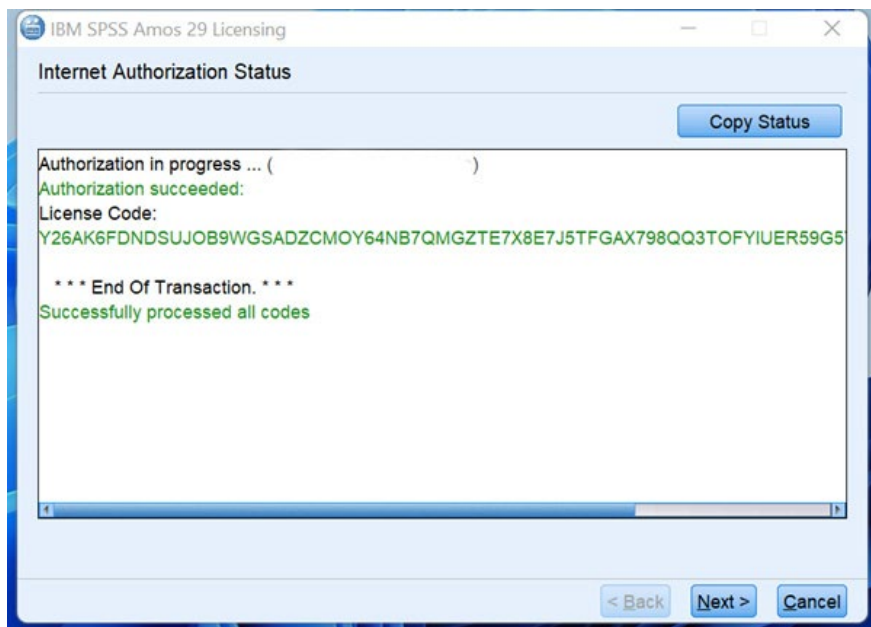
**Step 11:** Select the option 'Authorized User License' and click 'Next'.



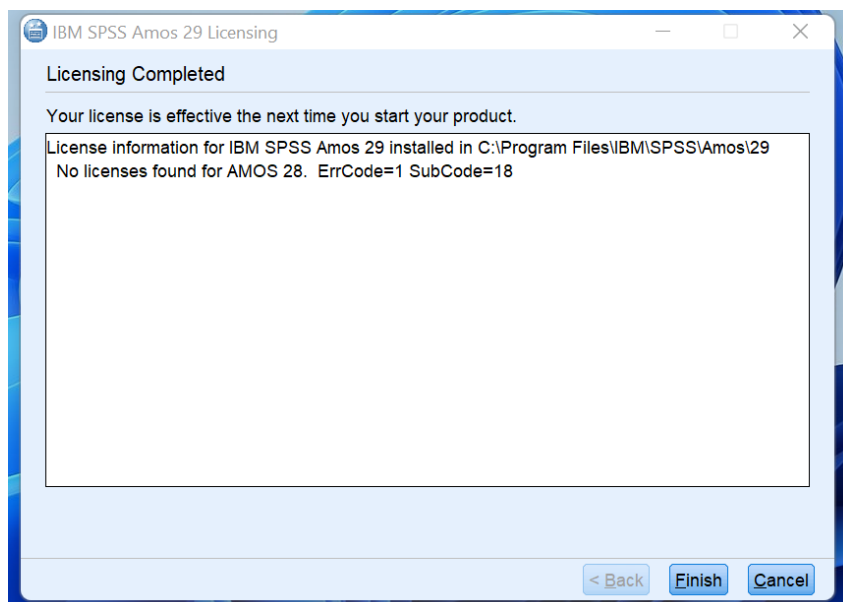
**Step 12:** In the field 'Enter Code', fill in your license code. Click on 'Add'. Your license code will now appear in the big white field underneath 'Enter Code'. Click 'Next'.



**Step 13:** You will now get a notification saying the authorization has succeeded. Click 'Next'.



**Step 14:** At the top of the screen it will now say 'Your license is effective the next time you start your product'. Klik op 'Finish'.



**Step 15:** Start SPSS Amos 29. You can now use SPSS Amos 29.

