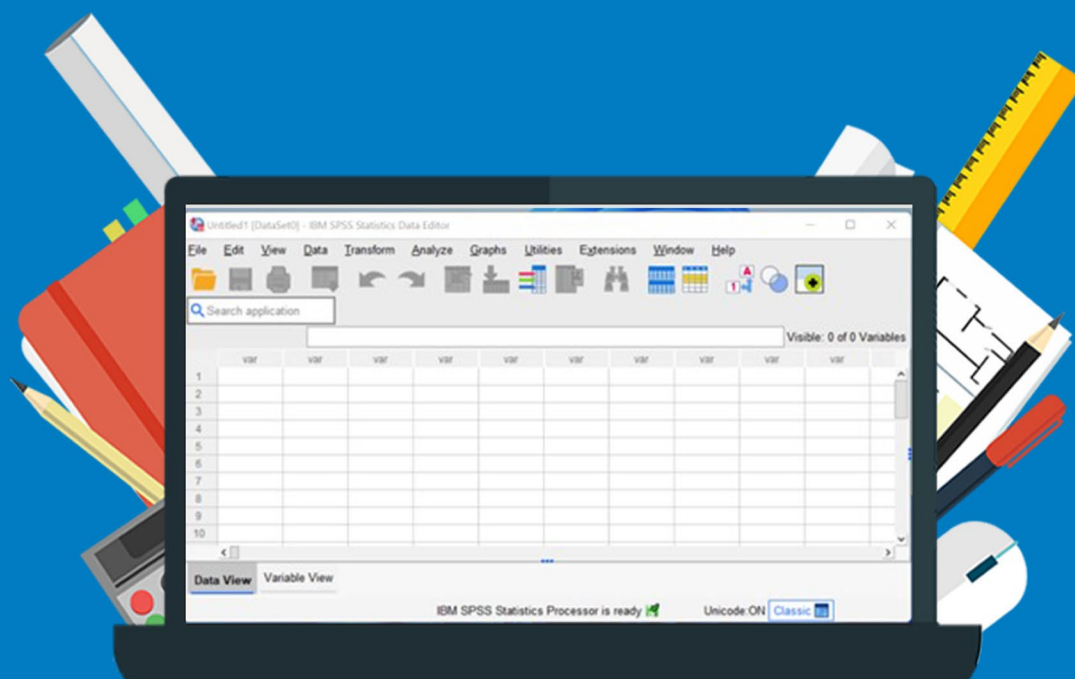


# Installation manual



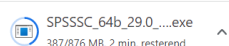
## SPSS 29

For Windows

**Before you install the software we'd like to point out the following:**

- SPSS 29 is only available in a 64-bit version.

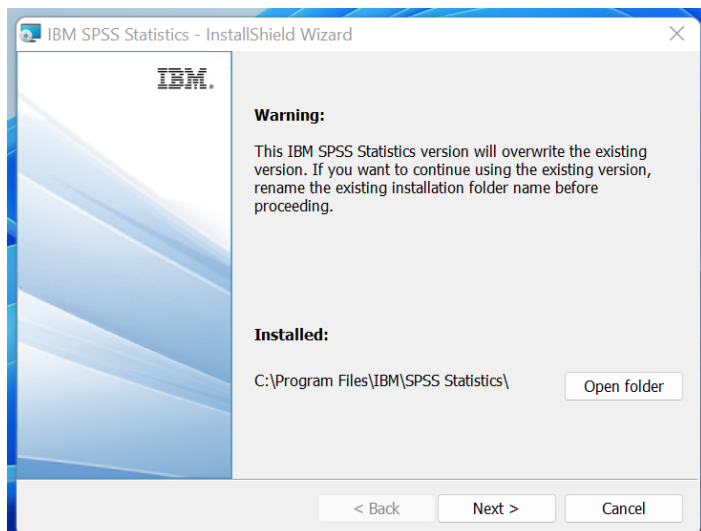
**Step 1:** Download the SPSS 29 setup file. You can do so by going to the tab 'Orders' in your account and then clicking 'Download'. The setup file will now start downloading, this may take a while.



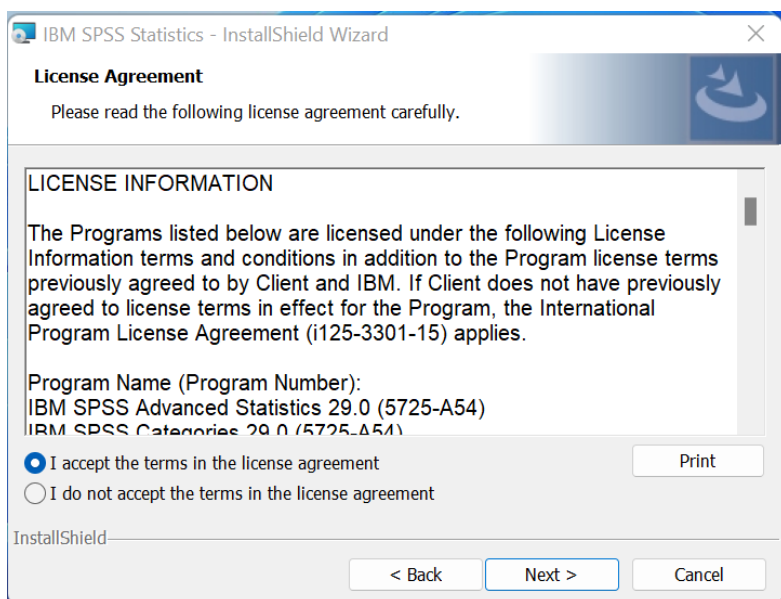
**Step 2:** Click on the downloaded file. The setup will now start. Please pay attention that SPSS 29 **will overwrite** any existing installations of version 28.x or later.



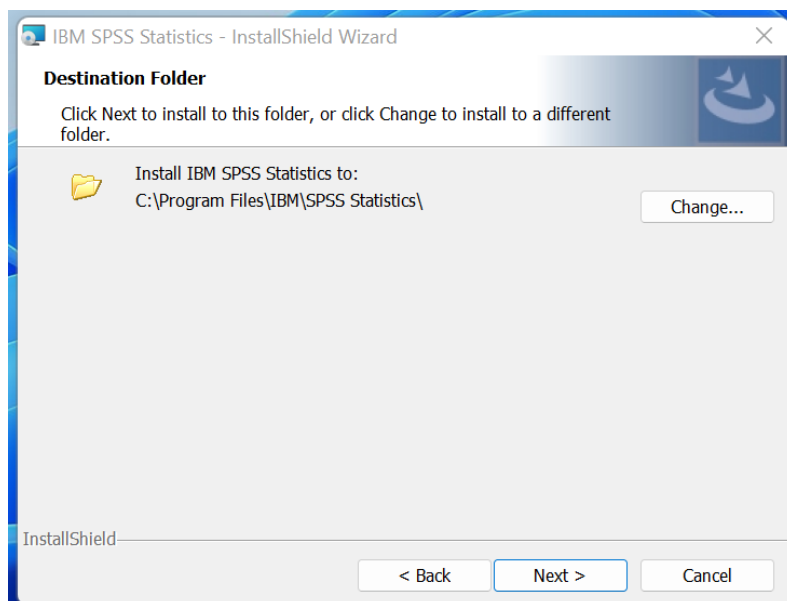
**Step 3:** If you wish to keep your current installation of SPSS, you can change the name of the folder of your previous installation in this screen. You can do this by clicking 'Open folder' and then changing the name. If you have completed this or if this step does not apply to you, click 'Next'.



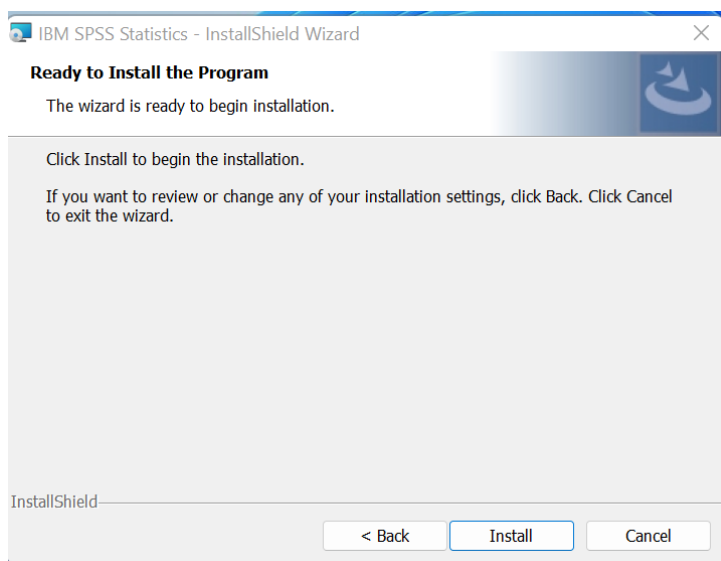
**Step 4:** Accept the license agreement and click 'Next'.



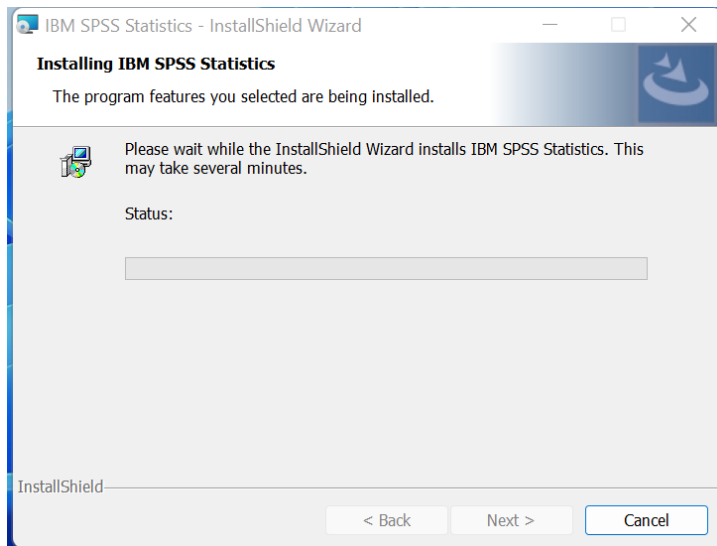
**Step 5:** Choose which folder you want to use for your download and click 'Next'.



**Step 6:** Click 'Install' and start the installation.



**Step 7:** SPSS will now install, this may take a while. Once the installation has finished you can click 'Finished'.

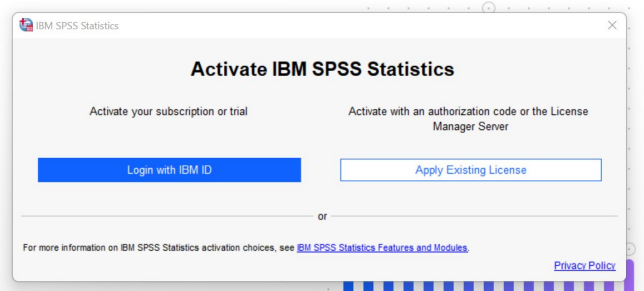


**Step 8:** You can now choose between 'Login with IBM ID' or 'Apply Existing License'. Choose the option 'Apply Existing License'.

Version: 29.0.0.0 (241)

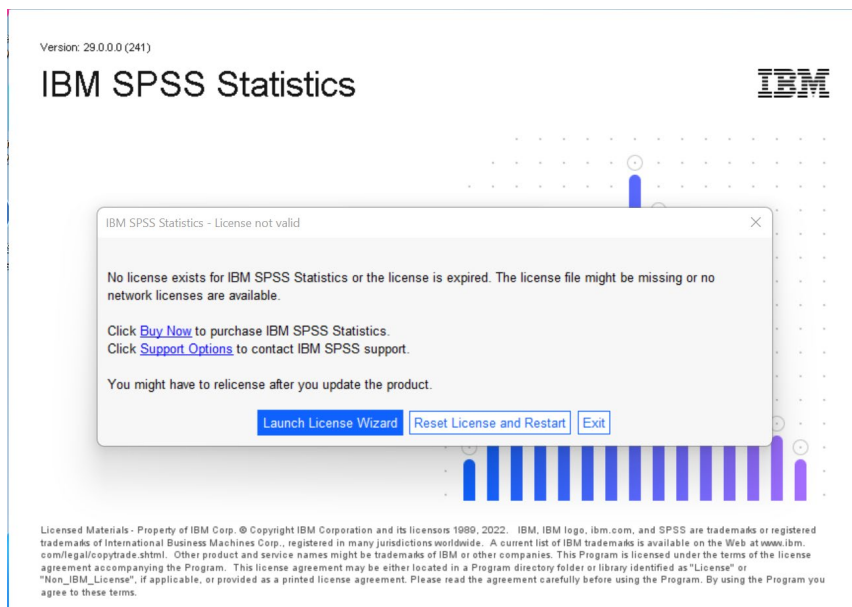
IBM SPSS Statistics

IBM

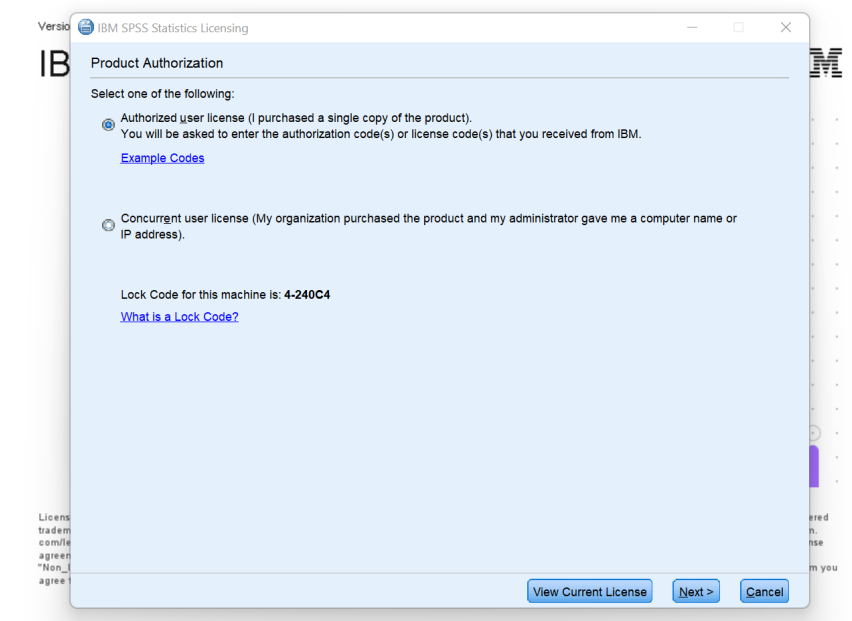


Licensed Materials - Property of IBM Corp. © Copyright IBM Corporation and its licensors 1989, 2022. IBM, IBM logo, ibm.com, and SPSS are trademarks or registered trademarks of International Business Machines Corp., registered in many jurisdictions worldwide. A current list of IBM trademarks is available on the Web at [www.ibm.com/legal/copytrade.shtml](http://www.ibm.com/legal/copytrade.shtml). Other product and service names might be trademarks of IBM or other companies. This Program is licensed under the terms of the license agreement accompanying the Program. This license agreement may be either located in a Program directory folder or library identified as "License" or "Non\_IBM\_License", if applicable, or provided as a printed license agreement. Please read the agreement carefully before using the Program. By using the Program you agree to these terms.

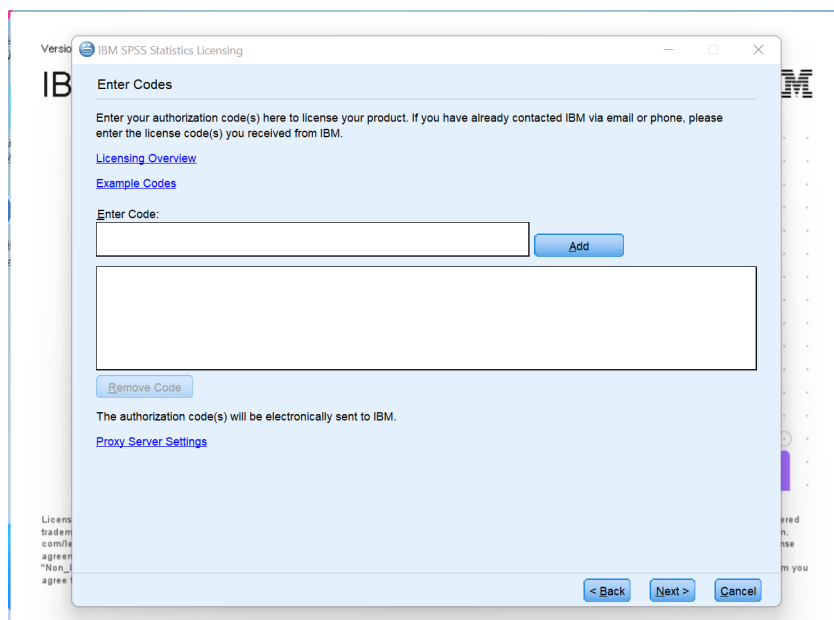
**Step 9:** In the next screen, click on the option 'Launch License Wizard'. The 'License Wizard' will now open.



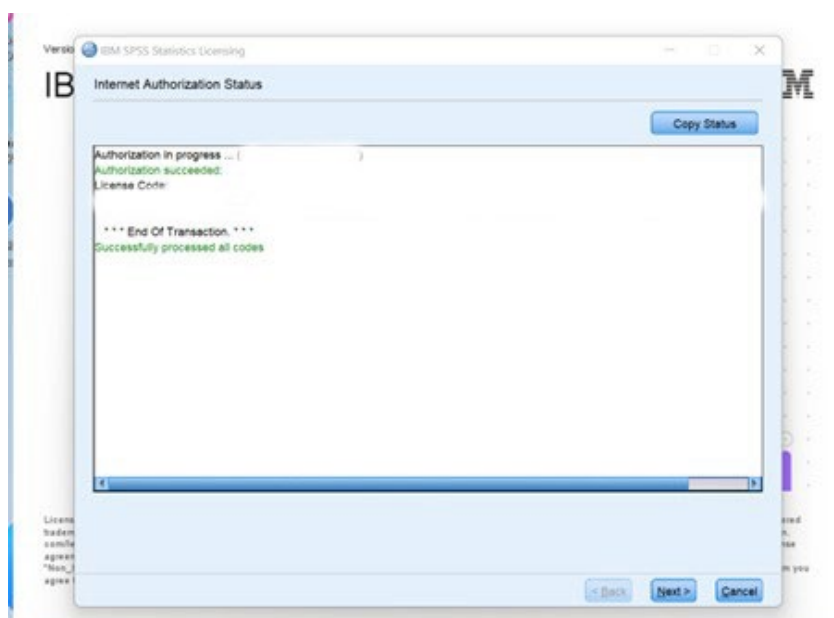
**Step 10:** Choose the option 'Authorized user license' and click 'Next'.



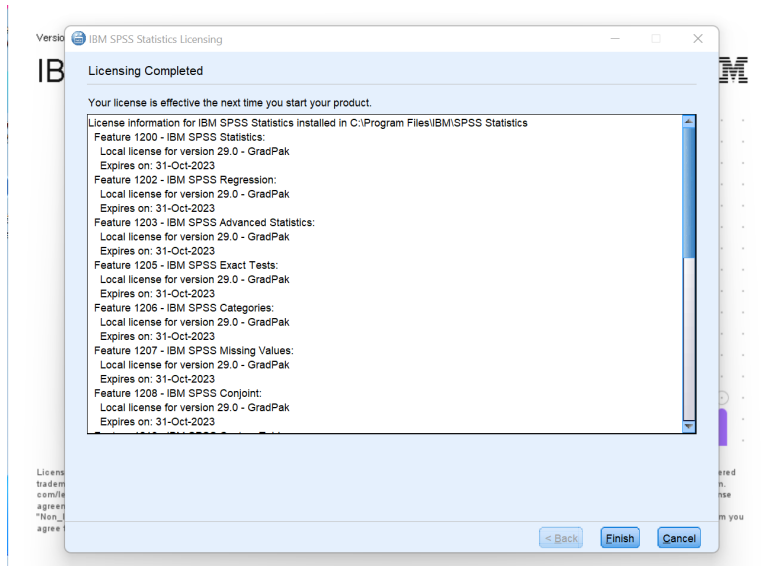
**Step 11:** Enter your code in the 'Enter Code' field, then click 'Add'. Your license code will now appear in the empty field underneath the 'Enter code' field. Click 'Next'.



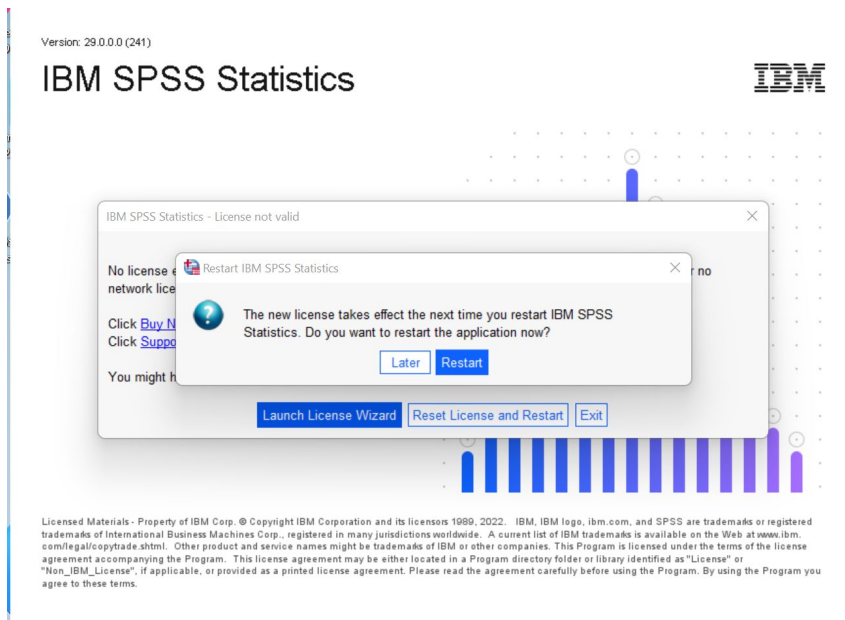
**Step 12:** You will get a notification saying your license is activated. Click 'Next'.



**Step 13:** In the next screen you can see when your license expires. Click 'Finish'.

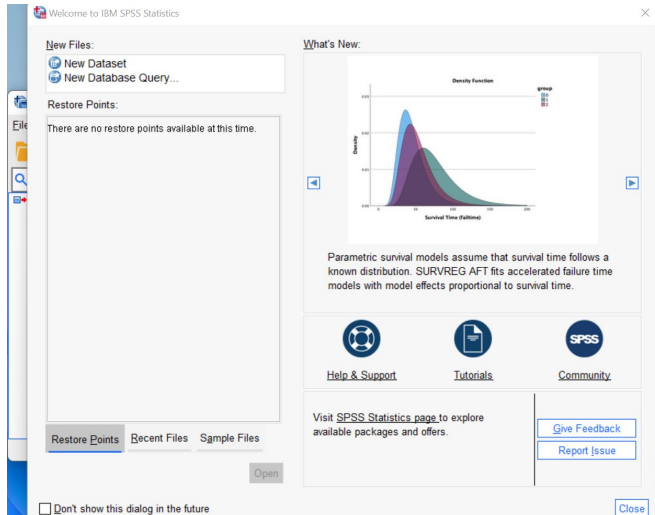


**Step 14** (if necessary): SPSS will now ask to restart in order to activate your new license. Click 'Restart'. SPSS 29 will now start.





**Step 15:** The start up screen of SPSS 29 will now open. Click 'Close'.



**Step 16:** You have now successfully installed SPSS 29!

