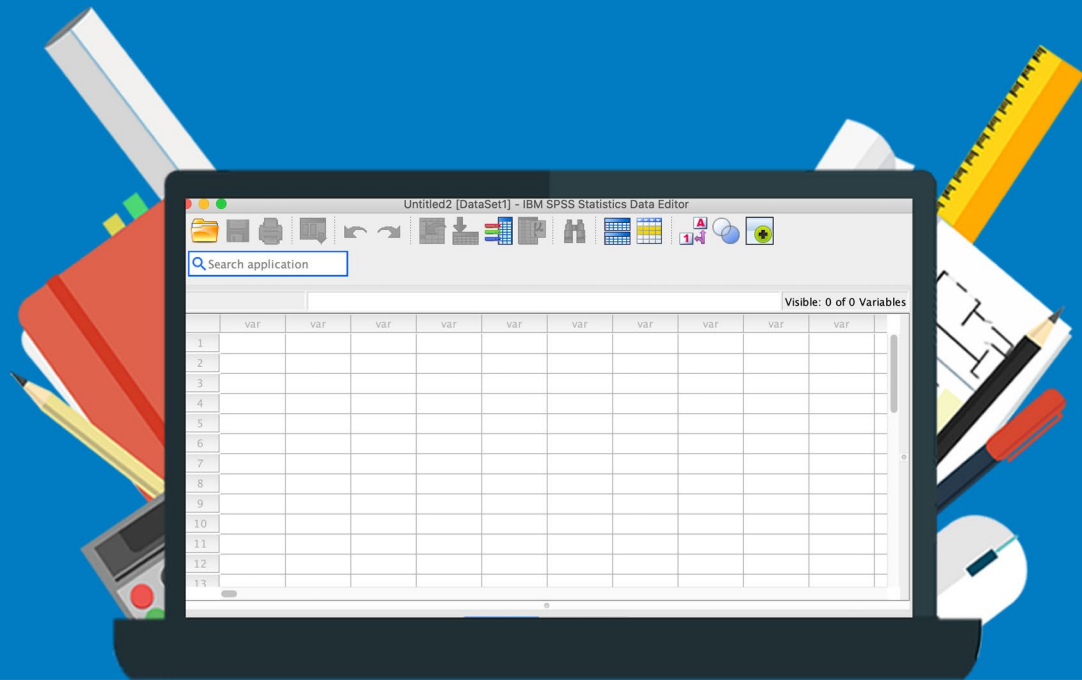


Installation Manual



SPSS Statistics

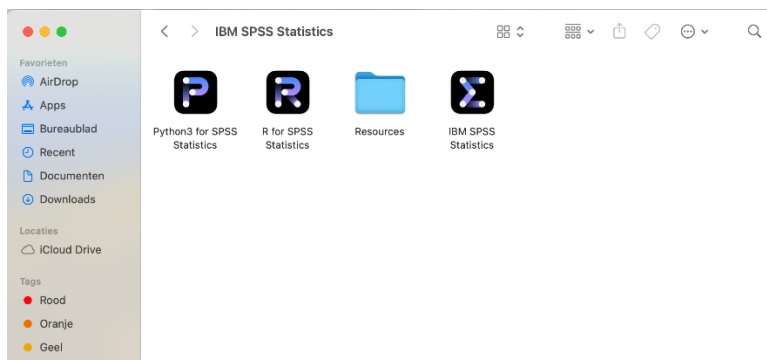
Interim Fix

For Mac

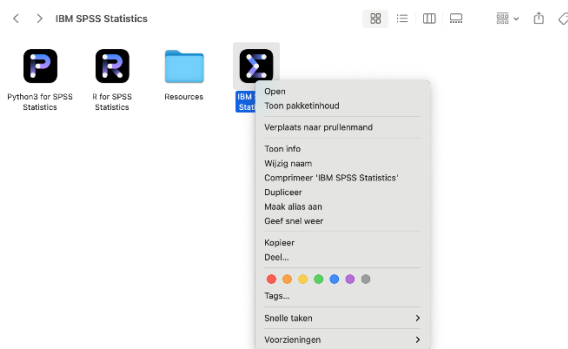
Attention: There is a new version available of the Interim Fix. Even if you've already installed the previous Interim Fix, we recommend you follow the steps again.

Step 1: Go to the SPSS installation folder, this is usually /Applications/IBM SPSS Statistics/SPSS Statistics.app.

Attention: Are you using SPSS 27? Then the installation folder will be /Applications/IBM SPSS Statistics 27/SPSS Statistics.app.



Step 2: Open the “Contents” folder. This folder might be invisible. In that case, click on the “IBM SPSS Statistics” icon and Ctrl + click on the icon so a menu appears. Choose “Show package content”.

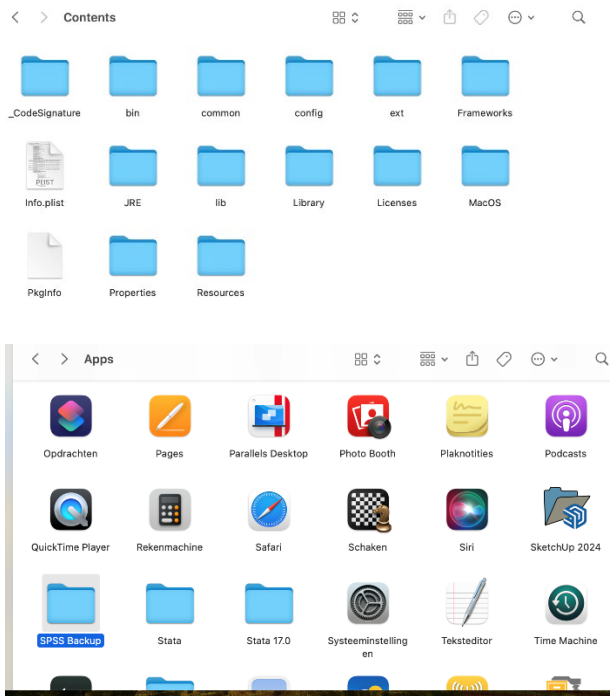


< > IBM SPSS Statistics



Contents

Step 3: Click on the “JRE” folder and drag it to a location **outside of the installation folder**. In this case, we created a new folder and named it “SPSS backup”.



Step 4: Start the Interim Fix download for your version of SPSS. In this case, the fix for SPSS 31 will be downloaded.

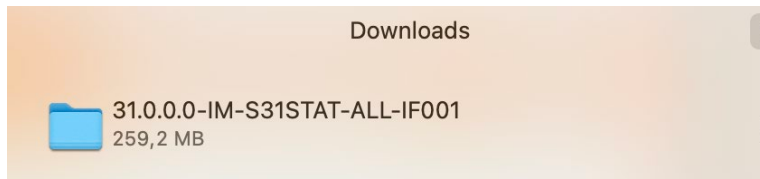


↓ Download 31.0.0.0-IM-S31STAT-ALL-IF005.zip (302.9 MB)

You can find the link to the Interim Fix for the different versions here:

- SPSS 27: <https://surfdive.surf.nl/index.php/s/dJM96TRBeRezz28>
- SPSS 28: <https://surfdive.surf.nl/s/3adyBRCH4ZjYQCD>
- SPSS 29: <https://surfdive.surf.nl/s/etFCsXJ85549QLw>
- SPSS 30: <https://surfdive.surf.nl/s/8Xf7rA6imo3NFx7>
- SPSS 31: <https://surfdive.surf.nl/s/wFWeKY2Ae249Ckm>

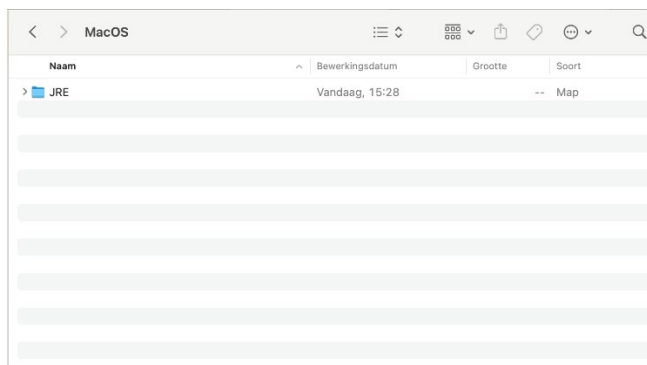
Step 5: Click on the downloaded file. The .zip file will be extracted automatically.



Step 6: Click on the “MacOS” folder.

Naam	Bewerkingsdatum	Grootte	Soort
Abstract.txt	13-06-2025, 11:52	369 bytes	Platte tekst
> Linux64	Vandaag, 13:11	--	Map
> MacOS	Vandaag, 13:11	--	Map
> pLinux64	Vandaag, 13:11	--	Map
Readme_31.0.0.0-01.txt	13-06-2025, 15:23	2 KB	Platte tekst
> Win64	Vandaag, 13:11	--	Map
> zLinux64	Vandaag, 13:11	--	Map

Step 7: You will now see the “JRE” folder. Drag it to the installation folder /Applications/IBM SPSS Statistics/SPSS Statistics/Contents.app (or /Applications/IBM SPSS Statistics 27/SPSS Statistics/Contents.app for SPSS 27). You do not have to keep the old “JRE” folder you removed in step 3.



Step 8: You can now get back to using SPSS!

