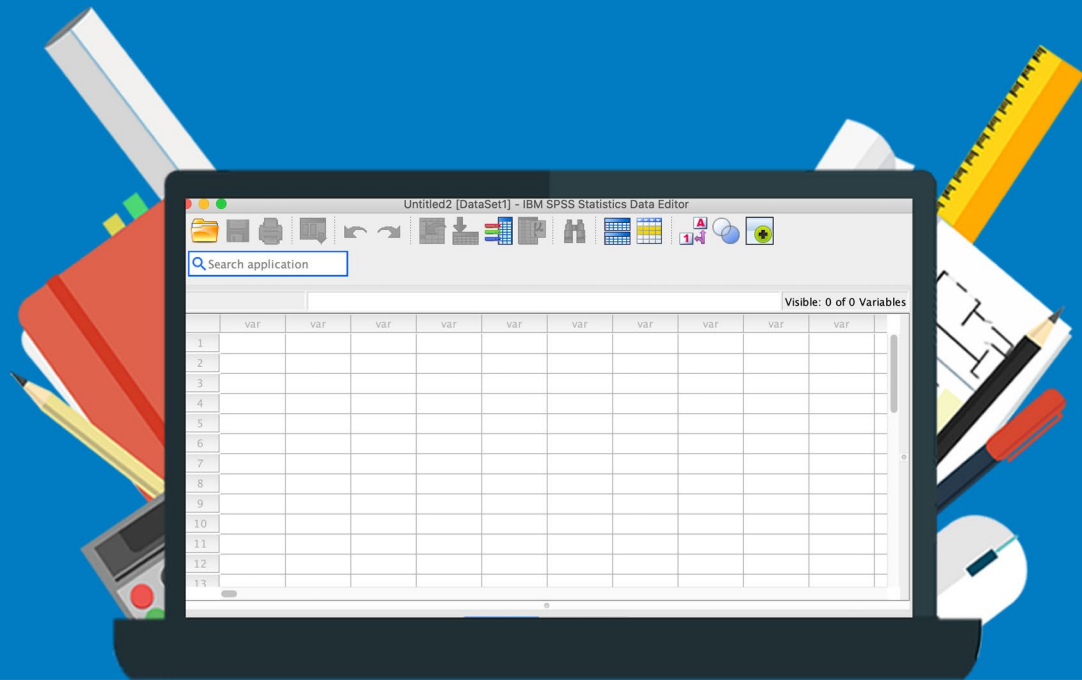


Installation Manual



SPSS Statistics

Interim Fix

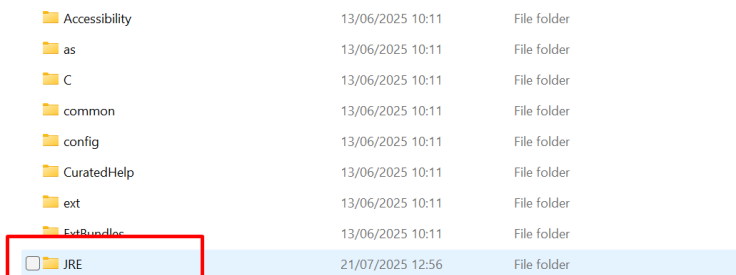
For Windows

Attention: There is a new version available of the Interim Fix. Even if you've already installed the previous Interim Fix, we recommend you follow the steps again.

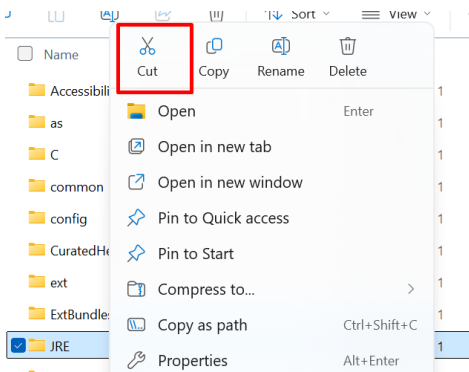
In order to apply the Interim Fix you must be logged in as Administrator.

Step 1: Go to the folder where you installed SPSS, this is usually C:\Program Files\IBM\SPSS Statistics\. Then, right mouse click on the JRE folder.

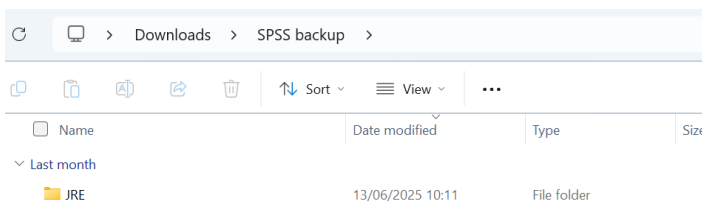
Attention: Are you using SPSS 27? In that case the installation folder is C:\Program Files\IBM\SPSS\Statistics\27.



Step 2: Click on “Cut”, or use the Ctrl + X shortcut.



Step 3: In order to work safely, we'll first make a back-up of the current Java-folder in SPSS. Move the “JRE” folder from the SPSS installation folder to a safe place outside of the SPSS folder, for example a folder on your desktop. In this case we created a new folder and called it “SPSS backup”. Right mouse click on “Paste” or use the Ctrl + V shortcut.



Step 4: Start the download for the Interim Fix for your version of SPSS. In this case the fix for SPSS 31 will be downloaded.



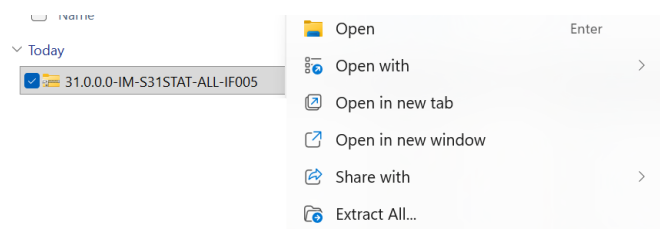
Download 31.0.0.0-IM-S31STAT-ALL-IF005.zip (302.9 MB)

You can find the link to the Interim Fix for the different versions here:

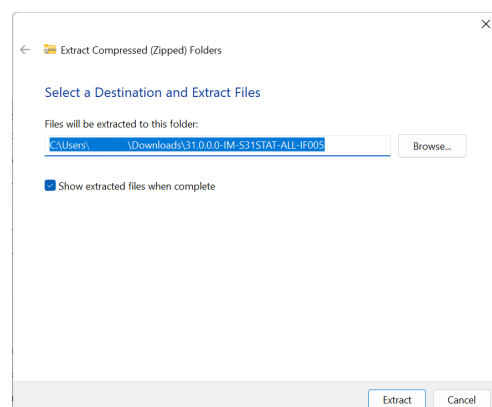
- SPSS 27: <https://surfdrive.surf.nl/index.php/s/dJM96TRBeRezz28>
- SPSS 28: <https://surfdrive.surf.nl/s/3adyBRCH4ZjYQCD>
- SPSS 29: <https://surfdrive.surf.nl/s/etFCsXJ85549QLw>
- SPSS 30: <https://surfdrive.surf.nl/s/8Xf7rA6imo3NFx7>
- SPSS 31: <https://surfdrive.surf.nl/s/wFWeKY2Ae249Ckm>

Step 5: Click on the downloaded file. Right mouse click on the .zip file and choose “Extract All...”.

Attention: You might find the .zip file is already extracted. In that case, you can skip steps 5 and 6 and continue on to step 7.



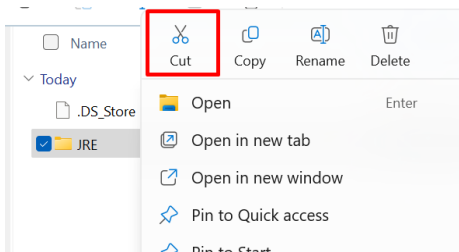
Step 6: Choose where you'd like to extract the .zip file to and click on “Extract”.



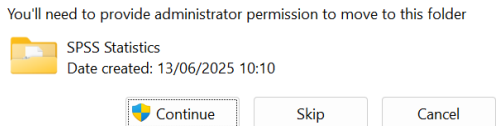
Step 7: Open the “Win64” folder.

Abstract	24/10/2025 11:22	Text Document	1 KB
Readme_31.0.0.0-05	24/10/2025 11:22	Text Document	3 KB
.DS_Store	24/10/2025 11:22	DS_STORE File	9 KB
zLinux64	24/10/2025 11:22	File folder	
Win64	24/10/2025 11:22	File folder	
pLinux64	24/10/2025 11:22	File folder	
MacOS	24/10/2025 11:22	File folder	
Linux64	24/10/2025 11:22	File folder	

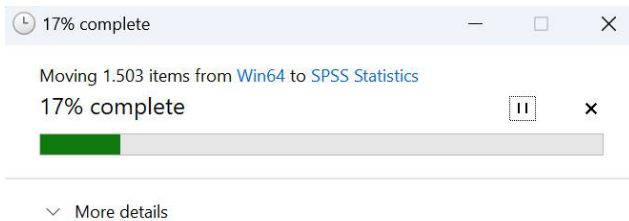
Step 9: With your right mouse button, click on the “JRE” folder and choose “Cut” as described in step 2.



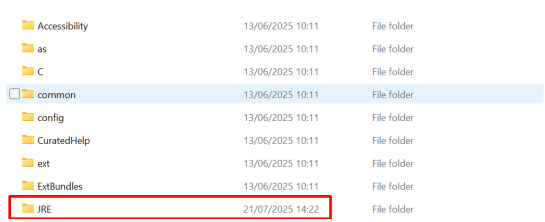
Step 10: Go back to the SPSS installation folder and paste the “JRE” folder as described in step 3. You will now be asked for permission to make changes to the installation folder. Click on “Continue”.



Step 11: The files will now be transferred, this may take a while.



Step 12: The new “JRE” folder will now appear in the installation folder. The date behind the folder will show it was modified recently. You do not have to keep the old “JRE” folder you removed in step 3.



Folder Name	Modified Date	Type
Accessibility	13/06/2025 10:11	File folder
as	13/06/2025 10:11	File folder
C	13/06/2025 10:11	File folder
common	13/06/2025 10:11	File folder
config	13/06/2025 10:11	File folder
CuratedHelp	13/06/2025 10:11	File folder
ext	13/06/2025 10:11	File folder
ExtBundles	13/06/2025 10:11	File folder
JRE	21/07/2025 14:22	File folder

Step 13: You can now get back to using SPSS!

